

RUG1 university of groningen




CITIES OF THE RISING SUN: I dream'd in a dream

Jouke van Dijk
University of Groningen, Faculty of Spatial Sciences, Department of Economic Geography, PO Box 800, NL- 9700 AV Groningen, The Netherlands
Jouke.van.dijk@rug.nl

Presentation at the 23rd Pacific Conference of the Regional Science Association International PRSCO and the 4th Indonesian Regional Science Association Institute IRSA, 2-4 July 2013, Bandung – INDONESIA

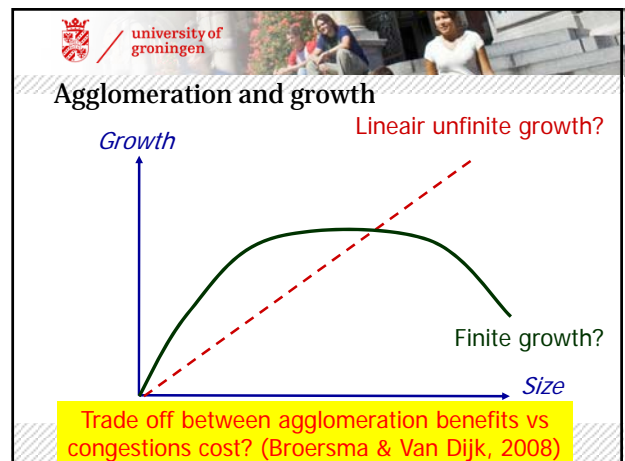
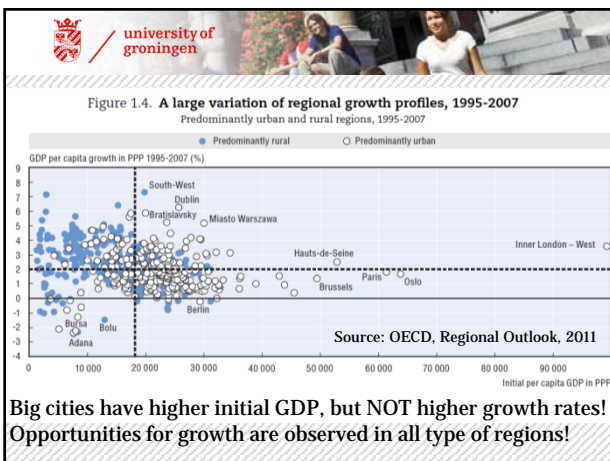
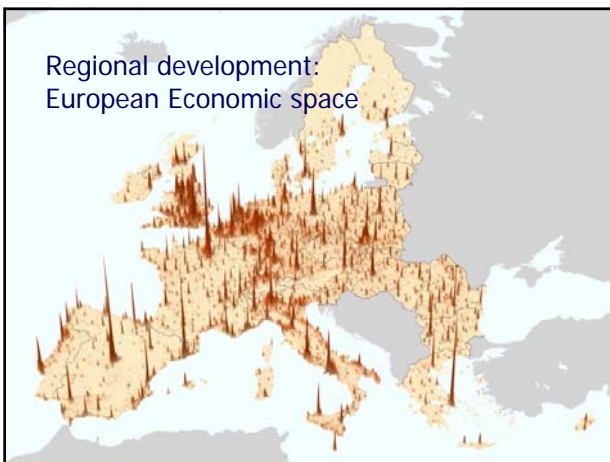
Special session 'CITIES OF THE RISING SUN A 'GREAT MINDS' SPECIAL PRSCO SESSION ON THE 'NEW URBAN WORLD'

university of groningen



*I dream'd in a dream,
I saw a city invincible to the attacks
of the whole of the rest of the earth:
I dream'd that was the new city of Friends
(Whitman)*

In:
O'Neill, J., *Netherland*, Vintage, New York, 2008



The Role and Value of Big Cities from pure economic and broad well-being perspective

- > **ECONOMIC:** Big cities have higher productivity, generate more knowledge outcomes (patents, innovations, copyrights, licenses), have higher human capital – both stocks and inflows
- > **But also: higher land and housing/land prices**
- > **WELL-BEING:** Big cities have high quality services and amenities like universities, musea, concerts
- > **But also: more traffic jams, more air pollution, more crime, higher risk of being the target of war and terrorist attacks**

People's Well-being: changing preferences

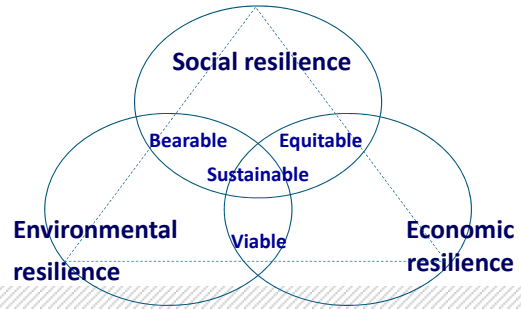
- | | |
|--|--|
| <p>Objective measures</p> <ul style="list-style-type: none"> > Life expectancy > Mortality rates > Poverty > Crime > Income > Un-/employment > Education > Gender balance > Working hours | <p>Subjective measures</p> <ul style="list-style-type: none"> > Health perception > Access to services > Material deprivation > Safety and trust > Life satisfaction > Happiness > Capabilities > Equal opportunities > Work life balance |
|--|--|

Figure 1.3. Intensity of dimensions of societal progress and geographic space

	Cities	Rural areas
Efficiency/income	+	-
Environmental quality	-	+
Social dimensions: Public goods (e.g. health, education)	+	-
Social dimensions: Community-produced goods (e.g. trust, security)	-	+

Source: OECD, Regional Outlook, 2011

Resilience of cities



The future of cities in the world:

- Shifts in the spatial structure of the economy? (Broersma/Van Dijk, 2008)?
- Scale effects in production (Krugman, NEG) versus amenities (Philip Graves; Partridge, 2011)
- Concentration followed by spread effects?
- Focus on livability and sustainability (amenities)
- Access to services: broadband, health, education, banking
- Environmental and social sustainability: less traffic, renewable energy, environmental protection, climate change, safety, social cohesion, house with a garden
- **I dream'd in a dream: from large metropolitan cities to very well connected satellites of Talent Towns**

*I dream'd in a dream,
I saw a city invincible to the attacks
of the whole of the rest of the earth:
I dream'd that was the new city of Friends
(Whitman)*

In:
O'Neill, J., *Netherland*, Vintage, New York, 2008